

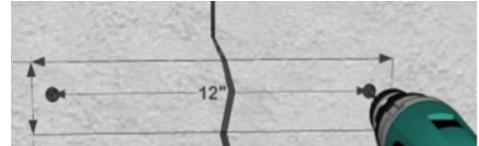
# SlabStitch® ST12 Mechanical Stitch

## INSTALLATION GUIDE and MATERIALS SPECIFICATION for CONCRETE CRACK REPAIR with BASECRETE WATERPROOF BONDCOAT

### TOOLS NEEDED

4" Masonry Saw, Chipping Hammer, Hammer Drill,  
1/2" and 5/8" Masonry Drill Bit, 3/4" Socket Wrench, Shop Vacuum

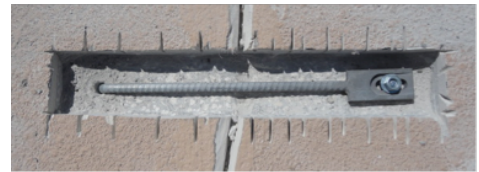
**STEP A** Locate stitch by tracing a rectangle (13" x 1-1/2") and marking the holes 12" apart as shown.



**STEP B** Using 1/2" masonry bit drill both holes into concrete approximately 4" deep.

**STEP C** To create the box niche, cut and chip approximately 1-1/2" deep rectangular area with masonry saw and chipping hammer. To improve the chipping operation and make cleaner box cuts, the rectangular area can be sliced with the saw as shown prior to chipping. Remove all debris, clean out completely. Open one hole with 5/8" drill and verify holes are 2 1/4" deep below niche bottom. Do not over drill hole depths.

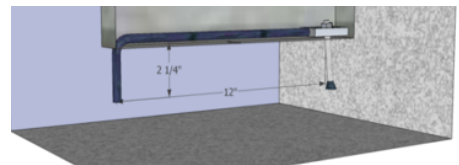
**STEP D** Place the sleeve anchor through the bottom of the stitch and thread nut onto the topside of the shaft 3 to 4 turns. Insure that the end stamped **XXX** is at the bottom of the anchor. Insert sleeve anchor into 5/8" hole and hook into 1/2" hole and tap down the head of the nut until sleeve is fully inserted in the hole and the unit is flush in bottom of niche.



**STEP E** Using a ratchet and 3/4" socket, tighten the nut on the anchor approximately 3 to 4 turns up to 50 Ft-Lb torque. Locate each stitch carefully. Mechanical Stitch installation is designed for permanent placement. Once installed and tightened down, the anchor cannot be easily removed or relocated.

**STEP F** Repeat above procedure with stitches spaced at approximately. 1-foot along the length of crack (8 Mechanical Stitches for 8-foot crack).

**STEP G** For comprehensive repair fill the box niche and crack with **BASECRETE Flexible Waterproof Bondcoat** and apply mesh as per manufacturers recommendations.



**NOTE:** A minimum 5" slab is recommended for Mechanical Stitch installation. For shallower slab thicknesses, drill the anchor hole and install and tighten the nut. Once tightened the threaded shaft may extend upward and can be ground down flush with the top of the nut. Chip out niche bottom flat for optimal installation performance.



Basecrete Technologies  
**941.312.5142**

info@basecreteusa.com • www.basecreteusa.com



*Performs better than any system  
on the market!*

U.S. Patent No. 99523207  
Issued 12/20/2016  
www.SlabStitch.com

# **BASECRETE**

Flexible Waterproof Bondcoat

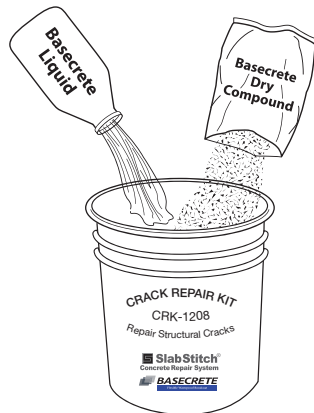
## BASECRETE APPLICATION GUIDELINES

Please see SlabStitch® Installation Guide before mixing Basecrete

### 3-STEP MIXING

**1**

Pour Basecrete Liquid into pail  
and  
Add Basecrete Dry Compound



**2**

Blend until uniform  
and  
Let stand for 4 minutes



**3**

Re-blend for  
1 Minute



1. Mix one part liquid to 4 parts compound. Mix to a mortar like consistency, allow to false set (per diagram above) and then remix before applying. Fill crack and overlap 2 to 3 inches to each side with trowel.
2. Center mesh over crack and trowel material over mesh until it is completely covered.
3. Remaining material can be used to fill out box niches created to hold the SlabStitch Mechanical Stitches.
4. Allow to cure overnight prior to finishing pool.



Basecrete Technologies  
**941.312.5142**

info@basecreteusa.com • www.basecreteusa.com



*Performs better than any system  
on the market!*

U.S. Patent No. 99523207  
Issued 12/20/2016  
www.SlabStitch.com